

# Homologation Report

---

## Whaleback Mountain

Boog / Lower Spout Race Trail  
Slalom and Giant Slalom

Whaleback Mountain  
Whaleback Mountain Road  
Enfield, NH

Initial Homologation Request

**Inspected On 6/6/2009 By**

**Ted Sutton**

SL U422/11/09

GS U421/11/09 Registered

Homologation Number \_\_\_\_\_



9. Emergency evacuation outside the course: ....Ski patrol is at top of mountain. Sled will be stationed at top of trail or at Ski patrol at top of mountain. Evacuation will be by side of Race trail. Enfield ambulance is 7 miles away; Dartmouth Hitchcock Hospital is 6 miles away.

10. Communication start - finish (telephone, electrical timing cable etc.): ...Electrical timing, 8 pair shielded cable .....

11. Have the necessary documents been submitted?      yes: **X**      no:

12. Uphill facilities (Lifts etc.): ...Whaleback Lift.....

13. Hourly capacity / persons: ....Approx. 800 per hour.....

14. The inspector was assisted by: .....Ken Benner.....

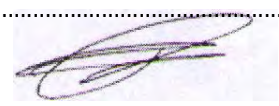
15. General remarks: ...The gradient and minimum 50 m width offers an excellent venue for scored and non-scored Slalom races and an excellent course for non-scored children's GS events.....

16. Conclusions: ....Excellent for Scored and non-scored SL; and for non-scored GS.....

**APPROVED:**            YES [X] SLALOM    NO [ ]                            **REGISTERED:** [ X ] GIANT SLALOM

IF NOT APPROVED, PLEASE NOTE REASONS:

Site and date: ....Whaleback 06/06/2009..... The inspector: ..Ted Sutton



**USSA Use Only:**

Chairman's Approval: .....

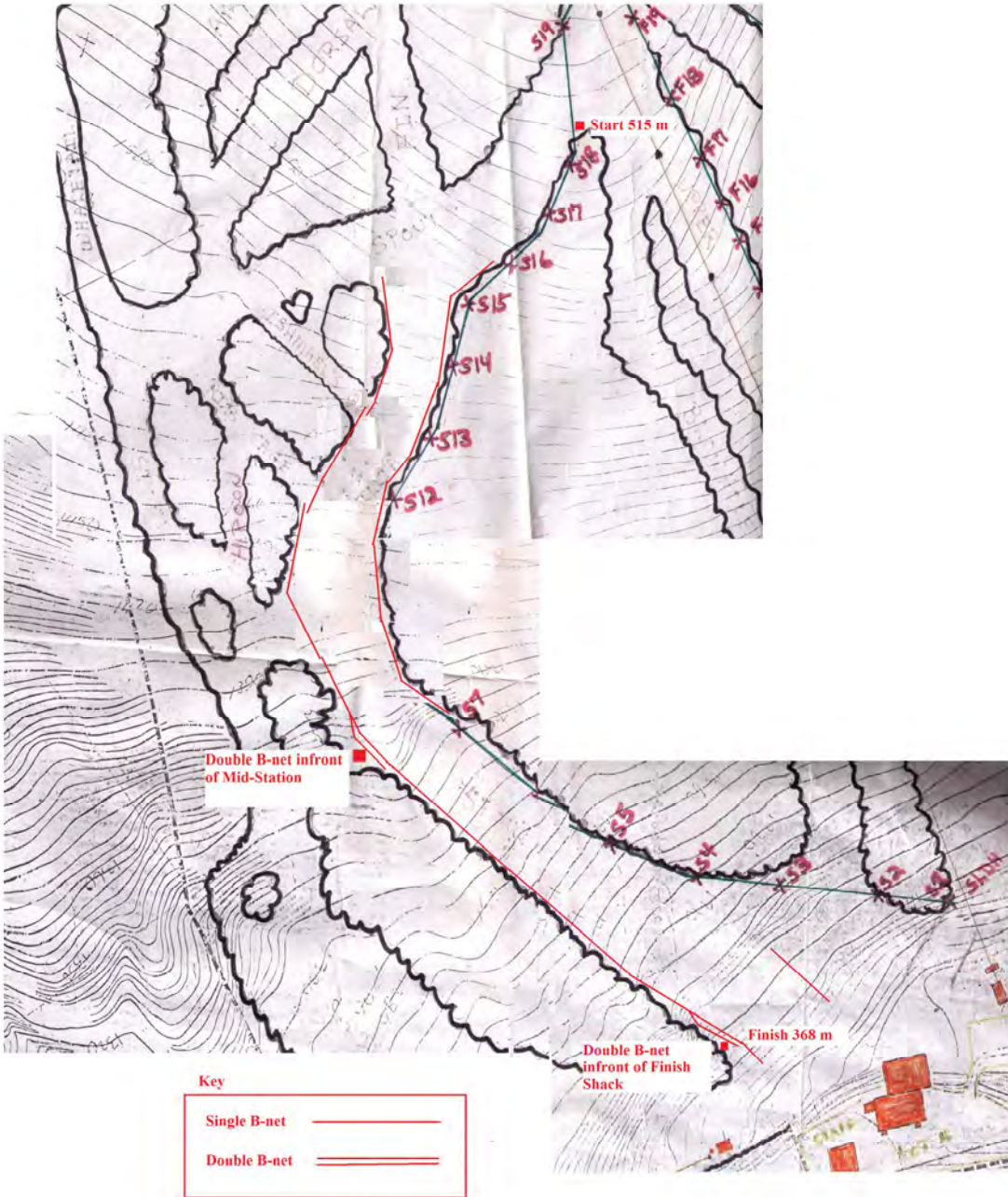


DATE: ....4 October 2009.....

USSA Course Approval/Registration Number: ..... SL U422/11/09      Reg GS U421/11/09

United States Ski and Snowboard Association Alpine fax: 435.649.3613

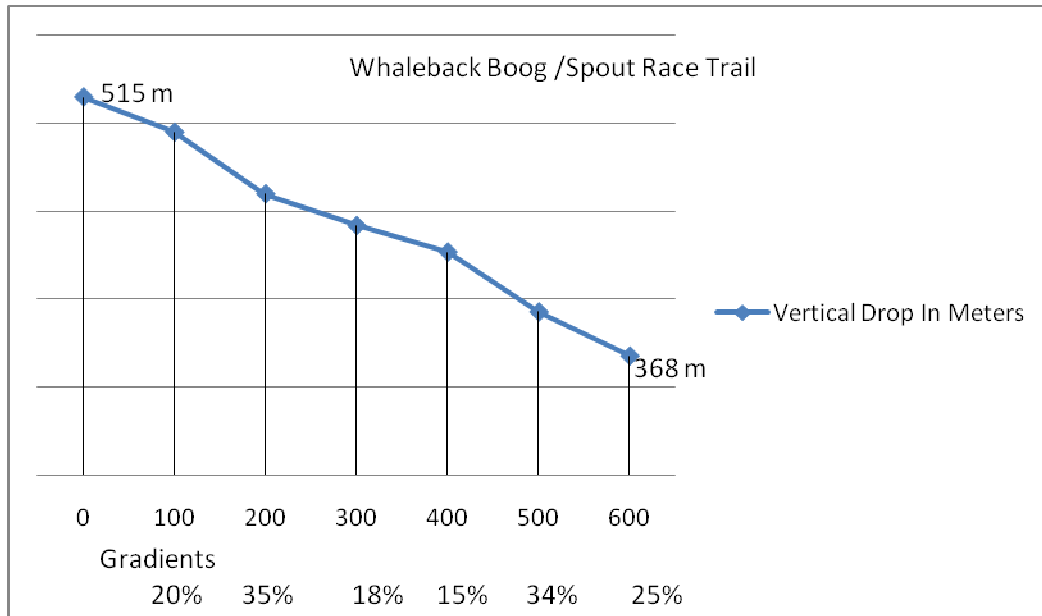
# Protection Report for Giant Slalom



# Aerial Photo



## Trail Gradients



UNITED STATES SKI AND SNOWBOARD ASSOCIATION

# CERTIFICATE OF HOMOLOGATION



The 15th day of November 20 09

The approval of the following course has been confirmed  
**Whaleback Mountain, Enfield, NH**

## BOOG / LOWER SPOUT RACE TRAIL – Giant Slalom

	Registered
TECHNICAL DATA	
Start .....	515 m
Finish .....	368 m
Difference .....	147 m
Total Length .....	520 m

THE APPROVED COURSE CORRESPONDS TO THE REQUIREMENTS OF THE USSA

**U421/11/09**

**T Sutton**

USSA Number Expires: November 15, 2019

Inspector

Chairman – USSA Courses Approval

4 Oct 09



UNITED STATES SKI AND SNOWBOARD ASSOCIATION

# CERTIFICATE OF HOMOLOGATION



The 15th day of November 20 09

The approval of the following course has been confirmed

**Whaleback Mountain, Enfield, NH**

## BOOG / LOWER SPOUT RACE TRAIL – Slalom

### TECHNICAL DATA

Start .....	515 m
Finish .....	368 m
Difference .....	147 m
Total Length .....	520 m

THE APPROVED COURSE CORRESPONDS TO THE REQUIREMENTS OF THE USSA

**U422/11/09**

**T Sutton**

USSA Number Expires: November 15, 2019

Inspector

 4 Oct 09

Chairman – USSA Courses Approval

